



Barfoot & Thompson Bridge to Bean Rock Race

~~Sunday 28th February~~ Saturday 17th April 2021

The Organising Authority is
Royal New Zealand Yacht Squadron
181 Westhaven Drive, Auckland 1011, New Zealand

Supplementary Sailing Instructions (SSI) V4 (Inc A1-3)

This sheet and the attachments are the supplements to
Appendix S of the Racing Rules of Sailing

Amendment 1:

SSI 4.2 Replace "1800" with "1700"

SSI 7.4 After "each startline" replace "and" with "along with", and delete "will be heard from the William C Daldy at the northern end of the Harbour Bridge startline"

SSI 11.2 Delete and replace with "The class handicap rating will be posted on-line before the race and will be decided using Weysmouth yardstick handicap rating as a guide."

SSI 12.3 Replace "1800" with "1600"

SSI 17.1 Replace "1800" with "1600"

Amendment 2:

SSI 4 Replace "28/02/2021" with "17/04/2021" & Replace "1055" with "1255".

SSI 4.1 Delete "0830 to", and after "1030" add "to 1230". Replace "28th February" with "17th April"

SSI 5.4 Replace "Devonport" with "Torpedo Bay"

SSI 5.5 Replace "Devonport" with "Torpedo Bay"

SSI 5.6 Replace "Devonport" with "Torpedo Bay"

SSI 5.7 Replace "Devonport" with "Torpedo Bay", Delete "Tiri"

SSI 6.1 Delete "Tiri"

SSI 7.2 Delete "Tiri"

SSI 7.4 Delete "and Tiri"

SSI 12.3 Replace "1600" with "1800"

SSI 17.1 Replace "Sunday 28th February 1600 hours" with "Saturday 17th April, RNZYS open from 1700, prizegiving starts 1800".

Attachment 1 Replace "Devonport" with "Torpedo Bay"

Attachment 2 Replace "Devonport" with "Torpedo Bay"

Attachment 3 Replace "Devonport" with "Torpedo Bay"

Amendment 3:

SSI 6.1 For Division A Finish – Starboard end, replace "Orange marker" with "Black buoy"

SSI 6.1 For Division B, C & D Finish – Port end, replace "Orange marker" with "Black with White stripe buoy".

Amendment 4:

SSI 5.4 Remove "preferred" before "course for Division A", add "B and C" before "will be Attachment 1"

SSI 5.5 Remove course

SSI 5.6 Remove course


~~SSI 6.1 Delete "Division A Finish—Starboard end, Orange marker Black buoy, Division A Finish—Port end, RNZYS Signal boat Te Kouma Blue flag, Division B, C & D Finish—Starboard end, RNZYS Signal boat Te Kouma Blue flag, Division B, C & D Finish—Port end, Orange marker Black with White stripe buoy"~~

Add "Division A,B & C to finish between the Signalboat *Te Kouma* and the black buoy laid to the West of the Signalboat. Division D to finish between the Signalboat *Te Kouma* and the black with white stripe buoy laid to the East of the Signalboat."

1 RULES

- 1.1 The event is governed by the rules as defined in The Racing Rules of Sailing.
- 1.2 The Yachting New Zealand Safety Regulations Part 1 shall apply.

2 NOTICES TO COMPETITORS

- 2.1 Notices to competitors will be posted on the official notice board located in the Western Entrance foyer at the RNZYS and posted on the event website <https://www.rnzys.org.nz/rnzys-events/bridge-to-bean-dinghy/>. Please download the *Team App*  and search for *Bridge to Bean* to receive the latest event notifications.

3 SIGNALS MADE ASHORE

- 3.1 Signals made ashore will be displayed on the *Bridge to Bean Team App*.
- 3.2 When flag AP is notified by the *Bridge to Bean Team App*, 1 minute is replaced with *not less than 60 minutes* in the race signal AP.

4 SCHEDULE OF RACES AND CLASS FLAGS

Day/Date:	Division:	Division Flag:	Time of First Warning Signal:
28/02/2021 17/04/2021	A	White	1055 1255
28/02/2021 17/04/2021	B	Red	1055 1255
28/02/2021 17/04/2021	C	Navy	1055 1255
28/02/2021 17/04/2021	D	Navy	1055 1255

- 4.1 Check-in at the designated ramps will be from ~~0830 to~~ 1030 to 1230 on the ~~28th February~~ 17th April.
- 4.2 A briefing is scheduled for all participants and support people at RNZYS at ~~1800~~ 1700 hrs on Thursday 25th February 2021.

5 COURSES

- 5.1 Division A will be lead by an America's Cup Course Marshall with a large white battle flag.
- 5.2 The Classes within Divisions is:
Division A: Optimist, Open Skiff.
Division B: Starling, P Class, Sunburst, RS Feva, RS Quest, 420, 470, Zephyr, Laser, OK, RS Aero, 3.7.
Division C: 29er, Javelin, Cherub, 12ft Skiff, Paper Tiger, Hobie, Tornado, 49er, 18ft Skiff.
Division D: Kiteboard, Windfoil, WASPZ, A Class, Nacra 17, Moth.
Other classes will be advised of their division assignment before race day.

- 5.3 The Organising Authority reserves the right to amend class divisions.
- 5.4 The ~~preferred~~ course for Division A, B and C will be *Attachment 1* from a start line formed by the spans of the Harbour Bridge to Bayswater racing buoy (Stb), Stanley Point racing buoy (Stb), laid Orange buoy 1 near Devonport (Prt), ~~Devonport~~ **Torpedo Bay** racing buoy (Stb), Orakei racing buoy (Prt), Bean Rock racing buoy (Prt), Bean Rock Light House and Doris Rock port marker (Stb), to the Finish line.
- 5.5 ~~The preferred course for Division B will be Attachment 2 from a start line formed by the spans of the Harbour Bridge to Bayswater racing buoy (Stb), Stanley Point racing buoy (Stb), laid Orange buoy 1 near Devonport (Prt), Devonport Torpedo Bay racing buoy (Stb), Orakei racing buoy (Prt), Bean Rock racing buoy (Prt), Rough Rock racing buoy (Stb), Northern Leading racing buoy (Stb), to the Finish line.~~
- 5.6 ~~The preferred course for Division C will be Attachment 3 from a start line formed by the spans of the Harbour Bridge to Bayswater racing buoy (Starboard), Stanley Point racing buoy (Stb), laid Orange buoy 1 near Devonport (Prt), Devonport Torpedo Bay racing buoy (Stb), Orakei racing buoy (Prt), Bean Rock racing buoy (Prt), Narrowneck racing buoy (Stb), Saltworks racing buoy (Stb), Northern Leading racing buoy (Stb), to the Finish line.~~
- 5.7 The preferred course for Division D will be *Attachment 3* but from a start line formed by the Bayswater racing buoy to Signal boat **Tiri**, Stanley Point racing buoy (Stb), laid Orange buoy 1 near Devonport (Prt), ~~Devonport~~ **Torpedo Bay** racing buoy (Stb), Orakei racing buoy (Prt), Bean Rock racing buoy (Prt), Narrowneck racing buoy (Stb), Saltworks racing buoy (Stb), Northern Leading racing buoy (Stb), to the Finish line.

6 MARKS

6.1 The description of the marks is in the table below

Mark:	Description:
Start - Starboard end	Western side of Harbour bridge south
Start – Port end	Western side of Harbour bridge 4 th span from south
Start Division D – Starboard	RNZYS Signal boat Tiri Orange flag
Start Division D – Port	Yellow Bayswater racing buoy
Harbour racing buoys	The yellow racing buoys designated by the harbour master
Laid Orange buoy 1	A large orange buoy laid near Devonport wharf
Division A Finish – Starboard end	Orange marker Black buoy
Division A Finish – Port end	RNZYS Signal boat Te Kouma Blue flag
Division B, C & D Finish – Starboard end	RNZYS Signal boat Te Kouma Blue flag
Division B, C & D Finish – Port end	Orange marker Black with White stripe buoy

Division A,B & C to finish between the Signalboat **Pembles Bay** and the black buoy laid to the West of the Signalboat. Division D to finish between the Signalboat **Pembles Bay** and the black with white stripe buoy laid to the East of the Signalboat.

7 THE START

- 7.1 The starting line will be the western side of the spans of the Auckland Harbour Bridge as described in SSI 6.1 and shown in *Attachment 4: Start 33*.
- 7.2 The starting line for Division D will be from RNZYS Signal boat **Tiri** to the yellow Bayswater racing buoy.

- 7.3 The Race will be started using RRS 30.3 U Flag Rule. There will be No Recalls. This changes RRS 29 and 30.
- 7.4 Flags will be displayed from the Signal boats *Te Kouma* ~~and Tiri~~ at the southern end of each startline ~~and along with~~ sound signals. ~~will be heard from William C Daldy at the northern end of the Harbour Bridge startline.~~

8 TIME LIMITS

DIVISION	TARGET TIME	TIME LIMIT	FINISH WINDOW
A	55 minutes	90 minutes	+ 30 minutes
B	62 minutes	90 minutes	+ 30 minutes
C	65 minutes	90 minutes	+ 30 minutes
D	24 minutes	90 minutes	+ 30 minutes

9 PENALTY SYSTEMS

- 9.1 RRS 44.1 is changed so that the Two-Turns Penalty is replaced by the One-Turn Penalty.

10 AREAS THAT ARE OBSTRUCTIONS

- 10.1 The following areas are designated as obstructions for the purposes of RRS 19 & 20 and shall be passed on the main channel side only.
- 10.1.1 Cable beacons east of Devonport Wharf
- 10.1.2 Green Sandspit marker stake (SW of Torpedo Wharf)
- 10.1.3 All moored vessels and moorings in or adjacent to the designated Small Craft mooring areas shown on Chart NZ 5322
- 10.1.4 The Okahu Bay wave break and all vessels and moorings in the Okahu Bay mooring area.
- 10.1.5 The Westhaven mooring area defined by the line representing an extension of the permanent wave breaks.
- 10.1.6 A straight line drawn between the most northern point of Wynyard Point and the north western point of the Fergusson Terminal.
- 10.1.7 50 metres from the Calliope Wharves Naval Dock, Devonport Defence Area marked on Chart NZ 5322.

11 SCORING

- 11.1 A competitor will be scored using the rating of that rig that it enters for this Race.
- 11.2 ~~Class Ratings: All Classes will be governed by the Portsmouth yardstick handicap rating system.~~ The class handicap rating will be posted on-line before the race and will be decided using Weysmouth yardstick handicap rating as a guide.

12 SAFETY REGULATIONS

- 12.1 Boats not leaving shore to compete in the Regatta shall promptly notify the race office that they are not racing by personally informing the ramp coordinator and/or by texting 0276457788. [DP]
- 12.2 Competitors shall individually check in by scanning the QR code at their designated ramp and by personally checking-in with the ramp coordinator and receiving their colored bib. [DP]

- 12.3 Competitors shall individually check out by scanning the QR code at the ramp and by returning the colored bib to the ramp coordinator. [DP]
Signing off enters the participant into the prize draw held at RNZYS at ~~1800 1600~~ 1800.
- 12.4 A boat retiring from racing shall notify a course marshal or a Race Committee boat and shall return their colored bib before leaving the race area. [DP]

13 REPLACEMENT OF CREW

- 13.1 Substitution of competitors will not be allowed without prior written approval of the race committee. [DP]

14 EVENT ADVERTISING

- 14.1 Boats shall display event advertising if supplied by the Organising Authority. [DP]
- 14.2 The Organizing Authority and it's assignees may take and/or publish film, video or photos and you consent to their use.

15 OFFICIAL BOATS

- 15.1 Official boats will be marked with Barfoot and Thompson battle flags.

16 SUPPORT BOATS

- 16.1 Except when requested to participate in rescue operations, team leaders, coaches, and other support persons shall stay outside areas where boats are racing and are restricted to a 5 knot speed limit, from the time of the preparatory signal for the start of the race until all boats have finished or the race committee signals a postponement or abandonment of the race. The area the boats are racing in is defined as the area inside the course and within 100 metres of any mark, lay line, starting line, finishing line or any area where any boat that is racing is sailing or may sail. [DP]
- 16.2 Support boats shall comply with any reasonable request from any official boats or regatta official.
- 16.3 Attention is drawn to the relevant local council bylaws regarding wearing of lifejackets and other restrictions.
- 16.4 The Race Committee will be broadcasting on VHF Channel 17.

17 PRIZES

- 17.1 Prizes will be presented at RNZYS on ~~Sunday 28th February at 1800-1600 hours~~ Saturday 17th April, RNZYS open from 1700, prizegiving starts 1800.
- 17.2 Spot prizes and Special prizes will be awarded.
- 17.3 Prizes will be presented for each class as long as there are at least five entrants.
- 17.4 Remember to sign off at the ramp to be entered into the prize draw.
- 17.5 Prizes can only be collected at prizegiving.

18 INSURANCE

- 18.1 It is recommended that each participating boat be insured with valid marine third-party liability insurance.

19 RISK MANAGEMENT / DISCLAIMER OF LIABILITY

- 19.1 By participating in this event each competitor and the responsible adult agrees and acknowledges that sailing is a potentially dangerous activity with inherent risks. These

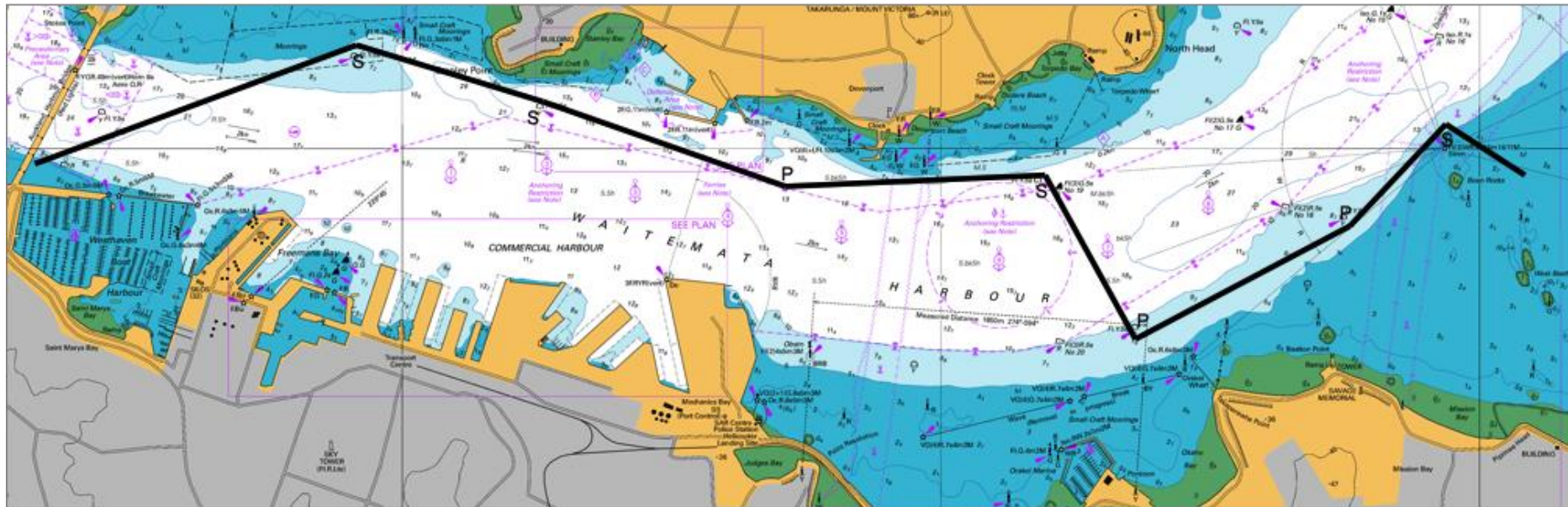
risks include strong winds and rough seas, sudden changes in weather, failure of equipment, boat handling errors, poor seamanship by other boats, loss of balance on an unstable platform and fatigue resulting in increased risk of injury. Participants accept responsibility for the safety of themselves, their boat and their other property whether afloat or ashore. Their boat is in good order, equipped to sail in the event and they are fit to participate;

- 19.2 RRS 3 states: *The responsibility for a boat's decision to participate in a race or to continue racing is hers alone.* The organising authority will not accept any liability for material damage or personal injury or death sustained in conjunction with, prior to, during, or after the regatta.

Last updated: 17 April 2021

Attachment 1

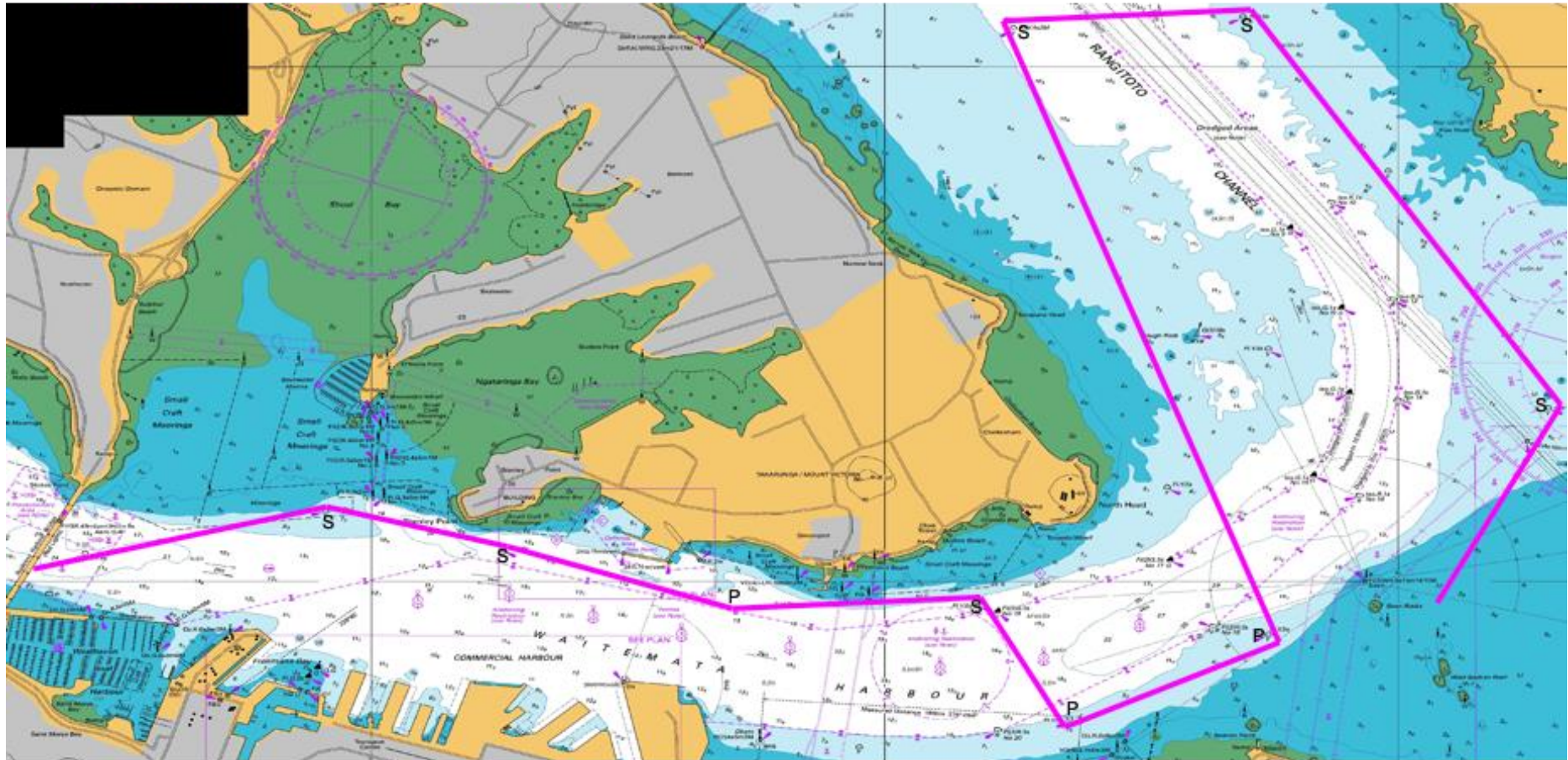
B2B Division A Course 5.1NMI



Start (Auckland Harbour Bridge), Bayswater racing buoy, Stanley Point racing buoy, laid buoy near Devonport Wharf, ~~Devonport~~Torpedo Bay racing buoy, Bean Rock racing buoy, Bean Rock Lighthouse (Doris Rock), Finish.

Attachment 3

B2B Division C Course 10.2NMI



Start (Auckland Harbour Bridge), Bayswater racing buoy, Stanley Point racing buoy, laid buoy near Devonport Wharf, ~~Devonport~~ Torpedo Bay racing buoy, Orakei racing buoy, Bean Rock racing buoy, Narrow Neck racing buoy, Saltworks racing buoy, Northern Leading

Attachment 4 – B2B Start area

