

BARFOOT & THOMPSON LADIES SUMMER SERIES

5th October 2023 to 4th April 2024

The Organising Authority is the Royal New Zealand Yacht Squadron 181
Westhaven Drive, Westhaven, Auckland 1011
Tel: 09 360 6800 | VHF: CH 17

SUPPLEMENTARY SAILING INSTRUCTIONS (SSI) Amendment 2 - 16 November 2023

1 **AMMENDMENTS**

A2 Removal of MRX and Elliott 7 Sprints information. (16/11/2023).

2 **RULES**

- 2.1 ~~For MRX entered in W/L racing, the series is a women's only event; only one male is allowed on-board whilst racing. He may give advice if requested but may not give any physical assistance except in an emergency. Any such physical assistance must result in the immediate retirement of the boat from the race.~~
- 2.2 ~~For WL races, on the water umpiring may be used for this event. Appendix UF will apply, link is at the end of the SSI's.~~
- 2.3 ~~For Elliott 7s, RRS 40.1, Personal Flotation Devices, shall apply at all times while afloat.~~

3 **SCHEDULE OF RACES**

- 3.3 ~~For W/L up to four (4) back-to-back races are scheduled on each race day. A total of 40 W/L races are scheduled as part of the series.~~
- 3.4 ~~The warning signal for subsequent W/L races on the same day will be made as soon as practicable after the finish of the last boat in the preceding race.~~

4 **CLASS FLAG**

- 4.2 ~~The class flag will be an 'E' (Echo) flag for Elliott 7 fleet.~~
- 4.3 ~~The class flag will be the MRX class flag for the MRX fleet.~~

5 **COURSES**

- 5.1 ~~If the Race Committee deems conditions to be unsuitable for windward/leeward racing, a harbour course will be run for Elliott 7's & and MRX. This will be signalled by displaying code flags "L" over "H" with the class flag on flagpole located to north of the RNZYS clubrooms.~~
- 5.2 ~~For W/L races, the course to be sailed, the order in which the marks are to be passed, and the side on which each mark is to be left are shown in Addendum A.~~
- a) ~~If course L1 is to be sailed, the numeral pennant "1" will be displayed from the bow of the race committee vessel.~~
 - b) ~~If course L2 is to be sailed, no numeral pennant will be displayed.~~

~~5.3 If a gate mark is missing and has not been replaced with an object displaying code flag "M" the remaining mark shall be rounded to port.~~

6 MARKS

~~6.1 The description of the marks for W/L races is as described in Addendum A.~~

7 SAILS (W/L)

~~7.1 MRX No later than the warning signal the race committee signal vessel will indicate which sail selections are to be used.~~

Signal	Sail Combinations Allowed
<no flag>	Mainsail, any jib/genoa, and spinnaker
R displayed	Mainsail, No. 2 genoa and spinnaker
K displayed	Mainsail, No. 2 genoa

~~7.2 Elliott 7 The sails to be used will be allocated by the OA. Competitors may be requested to exchange sails during a series to satisfy sponsorship commitments or other requirements.~~

8 THE START

~~8.1 W/L Races will be started using RRS 26 with the warning signal displayed 5 mins before the starting signal.~~

~~8.2 For W/L races, the start line will be between the flagstaff displaying an orange flag on the committee boat and the course side of the Yellow / black inflatable tetrahedral buoy.~~

9 CHANGE OF COURSE

~~9.1 For W/L races, to change the position of the windward mark, the race committee will lay a new Green mark and remove the original mark as soon as practicable. A new offset mark (mark 1a) will not be laid.~~

~~9.2 For W/L the change will be signalled before the leading boat has begun the leg to the new mark by displaying code flag "C" and making repetitive sound signals. This changes RRS 33.~~

10 THE FINISH

~~10.2 For W/L course, the finish line will be between a staff displaying a blue flag on the race committee finish boat and the course side of the finishing mark.~~

11 PENALTY SYSTEM

~~11.1 For W/L races RRS 44.1 is changed so the Two Turns Penalty is replaced by a One Turn Penalty.~~

13 TIME LIMITS

13.1

Race/Course	Time Limit	Finishing Window	Extension if one boat finishes within the Time Limit
Harbour	2 hours	-	30 minutes
W/L	45 minutes	15 minutes	-

~~RNZYS Appendix UF – UMPIRED FLEET RACING RULES~~

~~Royal New Zealand Yacht Squadron Edition~~

~~Version: Jan, 2022~~

[CLICK HERE](#)

Signed:

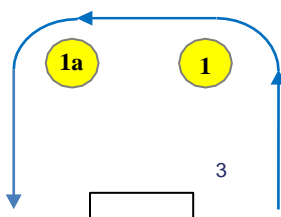


Brooke Adamson
Club Race Manager
Royal New Zealand Yacht Squadron

Date: 16/11/2023

~~ADDENDUM A~~

~~Course Illustration — Windward / Leeward~~



Course	Signal	Mark Rounding Order
L1	1	Start — 1 — 1a — Finish
L2	<no signal>	Start — 1 — 1a — 2s/2p — 1 — 1a — Finish

Mark	Description
1, 1a	Yellow inflatable tetrahedral buoy
2s, 2p	Red inflatable tetrahedral buoy
Starting mark starboard end	Race committee boat
Starting mark port end	Yellow/black inflatable tetrahedral buoy
Finishing mark starboard end	Yellow/black inflatable tetrahedral buoy
Finishing mark port end	Race committee boat
Change of course	Green inflatable tetrahedral buoy